

Columbian Oak 663D B198

Engineered Luxury Vinyl • Pure

This product has been discontinued and is no longer part of our regular line.

Product Specifications

Market Segments	Builder, Pro, Residential, Workspace
Sub Category	RCB
Collection	Pure
Style Name	Columbian Oak 663D
Style Number	B198
Construction	Engineered Luxury Vinyl
Format	Plank
Abrasion Resistance	General Commercial Use
Material	Recycled PVC DOP Free
Core Material	70% Recycled & Virgin PVC / 30 % Mineral
Width	8.03" (204 mm)
Total Thickness	0.197" (5 mm)
Wear Layer Thickness	0.0220" (0.5500 mm)
Core Thickness	0.1970" (5.0000 mm)
Backing	None
Edges	4-Sided Micro Bevel
Locking System	DreamClick
Backing Thickness	n/a
Finish	Medium Embossed
Top Surface	UV-Cured Polyurethane
Gloss	Matte
Pattern Repeat	9
IIC	62
STC	63
Design	Oak
Formaldehyde	E1
Vinyl Thickness	n/a
Length	52.2" (1326 mm)
Certifications	Virgin PVC, FloorScore, E1 Certified, Phthalates-Free, Certified A+, Environmental Product Declaration (EPD)
Installation Methods	Floating, Compatible with embedded radiant heating, Multidirectional 🔗 Engineered Luxury Vinyl Installation Guide - Pure 🔗 Engineered Luxury Vinyl Installation Video - Pure

Columbian Oak 663D B198

Engineered Luxury Vinyl • Pure

Plank Packaging information

Units Per Box	8
Boxes Per Pallet	56
Box Weight	27.72 pounds (12571.35 grams)
Square Meters Per Box	2.16
Square Meters Per Pallet	121.18
Square Feet Per Box	23.29
Square Feet Per Pallet	1304.41

Warranties

- [Engineered Luxury Vinyl Warranty Guide](#)
- [Engineered Luxury Vinyl Maintenance Guide](#)

Residential use

Stain Resistance *Lifetime*
Waterproof *Lifetime*
Petproof *Lifetime*
No Questions Asked Replacement *30 days*
Wear *Lifetime*
Manufacturing Defects *Lifetime*
Fade *Lifetime*

Commercial use

Stain Resistance *15 Years*
Waterproof *Lifetime*
Petproof *Lifetime*
Wear *15 Years*
Manufacturing Defects *15 Years*
Fade *15 Years*

Columbian Oak 663D B198

Engineered Luxury Vinyl • Pure

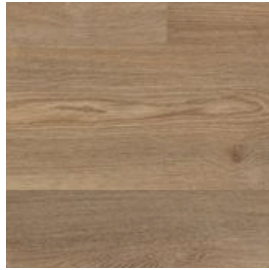
Styles offered



#B069 (Plank)
Zinc 616M
Medium Embossed
[Dropped Product](#)



#B101 (Plank)
Columbian Oak 636M
Medium Embossed
[Dropped Product](#)



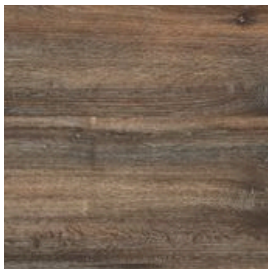
#B103 (Plank)
Columbian Oak 946M
Medium Embossed
[Dropped Product](#)



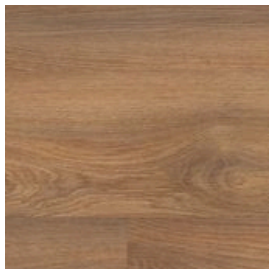
#B108 (Plank)
Toulon Oak 109S
Medium Embossed
[Dropped Product](#)



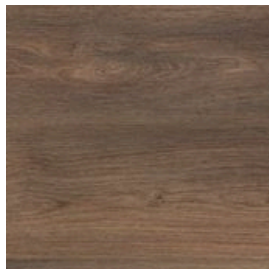
#B112 (Plank)
Toulon Oak 976M
Medium Embossed
[Dropped Product](#)



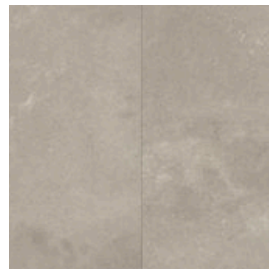
#B125 (Plank)
Lime Oak 966D
Medium Embossed
[Dropped Product](#)



#B197 (Plank)
Columbian Oak 226M
Medium Embossed
[Dropped Product](#)



#b198 (Plank)
Columbian Oak 663D
Medium Embossed
[Dropped Product](#)



#B584 (Plank)
Urban Stone Light Grey
Medium Embossed
[Dropped Product](#)



#B586 (Plank)
Urban Stone Greige
Medium Embossed
[Dropped Product](#)



#B589 (Plank)
Terrazzo Light Grey
Medium Embossed
[Dropped Product](#)



#B600 (Plank)
Classic Oak Light Natural
Medium Embossed
[Dropped Product](#)